

Bethlehem Missionary Baptist Church  
Pauls Valley, Oklahoma

# Hear God's Word

Bethlehem: Share the Love!

Bethlehem M.B.C., Pauls Valley, OK



500/75/50



Pastor Michael & Kimberly Eaton

Hello Bethlehem,

### Dates to Remember

August 2009

1st Bethlehem Men's Breakfast

2nd-5th Chickasaw District Association

First Baptist, Ardmore

6th Chickasaw District Scholarship Banquet Ardmore Oklahoma

The month of August as been designate, "**Kindness Month.**" A sidebar from Dr. Ralph F. Wilson article entitled, "Kindness Begins At Home" will help us to understand biblical kindness. This sidebar is entitled, "New Testament Kindness."

### New Testament Kindness

The Greek word *chrestos*, usually translated "kindness", originally meant "useful, good, suitable" (cf. Lk. 5:39; Mt. 11:30), later broadening to include moral excellence, genuine goodness of heart (cf. Rom. 3:12; 1 Cor. 15:33; Gal 5:22). Emperors and politicians liked to have this word engraved next to their name in public inscriptions. It sounded good for public consumption.

In the Bible, however, kindness is more than fluff. New Testament usage focuses on four facets of kindness: friendliness, compassion, helpfulness, and forbearance.

1. Friendliness. Kindness is friendly, actively seeking to form and foster personal relationships. It cannot exist in a vacuum. Kindness reaches out. "Love is patient, love is kind . . . it is not self-seeking" (1 Cor. 13:4, 5). It is the friendliness that inquires about a spouse's rough day.

Our model is God's friendly seeking us out, putting aside past hurts to restore friendship. We reflect His kindness, ". . . for you have tasted the kindness of the Lord" (1 Pet. 2:3, RSV). Our future also is secured by God's friendship, "that in the coming ages he might show the incomparable riches of his grace, expressed in his kindness to us in Christ Jesus" (Eph. 2:7).

Page 2.....

### Inside this issue:

Word of the Month	2
Vision to Victory	3
First Lady	4
Women's Ministry	5
Light House Christianity 101	6
Announcements	7
Leaders	8

Visit Our Website@ [www.HearGodsWordatBethlehem.com](http://www.HearGodsWordatBethlehem.com)

## The Word of the Month

### By Pastor Michael Eaton



2. Compassion. Compassion is the second earmark of kindness: a ready sympathy, a sincere concern for the needs of another. Kindness cares. We make it part of our wardrobe: "Clothe yourselves with compassion, kindness, humility, gentleness and patience," Paul wrote (Col. 3:12). "Be kind and compassionate to one another" (Eph. 4:32). Compassion flows readily to helpfulness.

3. Helpfulness. This third face of kindness is generous, willing to extend itself in practical ways to aid others. A sightless beggar was brought to the Master. The question, "What do you want me to do for you?" (Mk. 10:51) characterizes Jesus' manner with people.

In exchange for the harshness of the law, Jesus offers His help--a "kind (Greek *chrestos*) yoke" (Mt. 11:30). Moreover, we Gentiles are "grafted" into the tree of God's people through "the kindness of God" (Rom. 11:22). God's compassion spills forth in practical, helpful, merciful deeds.

4. Forbearance. The fourth face of kindness is uniquely Christian--forbearance in the face of provocation. Again and again God's response to hostility is an example of kindness. God's "kindness, tolerance and patience" are designed to lead us to repentance (Rom 2:4). "He is kind to the ungrateful and wicked" (Lk 6:35). Paul recites man's litany of enmity and spite, then trumpets: "But when the kindness and love of God our Savior appeared, he saved us . . ." (Tit. 3:4-5, cf. 2 Cor. 6:6-7).

Kindness is at the very roots of the God's nature. And His Spirit is maturing the Father's kindness in our character. This month Bethlehem we will be studying Kindness!

#### Word for the Month

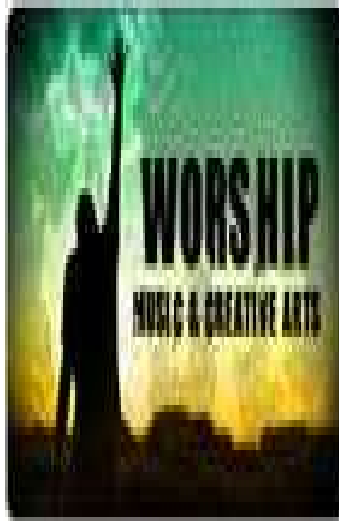
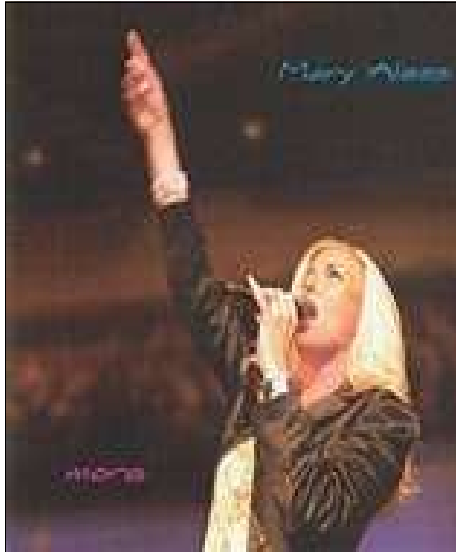
- **Clothe Yourself With Kindness** (Colossians 3:12) Sunday, August 2, 2009
- **The Kindness of Love** (1 Corinthians 13:3-5) Sunday, August 9, 2009
- **Kindness and the Servant of God** (2 Timothy 2:24) Wednesday, August 12, 2009
- **The Kindness That Uphold The Word of God** (Titus 2:5) Sunday, August 16, 2009
- **God's Kindness Leads To Repentance** (Romans 2:4) Wednesday, August 19, 2009
- **The Kindness of Our Savior** (Titus 3:3-5) Sunday, August 23, 2009
- **The Fruit of the Spirit: Kindness** (Galatians 5:21-23) Wednesday, August 26, 2009



**Daughters of Kindness (Proverb 30:31)** Sunday, August 30, 2009

Dr. Sheila M. Bailey

Join us as we are praying for God to reveal His Ram in the Bush for a Worship Leader.



### Pastor Michael Eaton

“Vision to Reality”  
Building a Church to Build a Congregation



Bethlehem Baptist Church  
Vision To Reality  
P. O. Box 563  
Pauls Valley, OK 73075

Phone: 405-238-5818

E-mail:  
mhe@heargodswordatbethleh



### Bethlehem Baptist Church

Bethlehem: Yes God Can!

**Vision To Reality:  
Building A Church To  
Build A Congregation  
(Matthew 16:18)**

We need your help for Vision To Reality. Vision To Reality is Bethlehem Baptist Church building program. **Give a love gift of \$25, \$50, \$75, \$100, \$1000 more or less.** If you do not have a church home send your tithes and offering to our church marked Vision To Reality. We believe God will bless you for your giving! Give online @ [www.HearGodsWordatBethlehem.com](http://www.HearGodsWordatBethlehem.com).

## “The Fruit of the Spirit: Kindness”

By First Lady Kimberly Eaton



The second of the three fruits most directly associated with personal, human relationships is [kindness](#). The translators of the King James Version render this Greek word as "gentleness." Even though gentleness is an aspect of being kind, this choice does not adequately describe the qualities the original word implies. When Paul illustrated how love acts, [patience](#) leaped into his mind first: "Love suffers long" ([I Corinthians 13:4](#)). Immediately following, he writes, "and is kind," giving the impression that love and kindness belong together to such an extent that we can conclude that without kindness no act is truly done in love!



Patience is love forbearing. Patience suggests self-restraint under the pressure of provocation, especially undeserved provocation. Kindness, though, implies a more *active* expression of love toward God and fellow man. Both patience and kindness are bound in the one quality—love. Those who provoke us may never notice patient love, but patient love may reveal itself in acts of kindness so that even our provokers are positively impressed. Kindness is such a rare quality these days that when someone is kind, it has a good chance of making the news!

The love Paul expounds in I Corinthians 13 is the love of God, which found its perfectly balanced expression in [Jesus Christ](#). His love was not only contemplative but also outgoing. Because of His love, He went about doing acts of kindness, healing and [casting out demons](#) ([Acts 10:38](#)). The [truth](#), He preached also expressed His love. His love was not merely congeniality; it was patient, enduring and ethical.

In most cases, kindness is not beyond any of us because it usually costs no money. It may take the sacrifice of time and energy. It may require the discipline to be thoughtful of others' needs and to make the effort to act. How much is required to cultivate smiling rather than frowning?; to pay a visit?; to say a word of encouragement or comfort?; to show friendliness by warmly and sincerely shaking hands?

**An American cliché runs, "Charity begins at home." Unfortunately, the fellowship of a local congregation is frequently the most difficult place to do good in the right spirit. This may be partly because of such misguided expectations that Christians "shouldn't have such problems," "shouldn't be causing such offenses," or "should know better than that," or many other accusations about character and personality flaws that we might make.**

We draw back and become weary for many reasons that appear justified: There is so much opposition to good plans for doing things. There is so much to do and, it seems, so few to do it. There are so many calls upon our time in other legitimate areas. There is all too often so much [ingratitude](#) among those whom we try to help that we become disheartened.

God has called the weak of [this world](#), and we have brought our character weaknesses and odd personality traits with us into the church. We see people in the church who are so depressed it seems they never have a bright day. Others have cups overflowing with troubles, and they want to dump on any willing to listen. The sick, poor, foolish, weak, cynical, stubborn, critical, cutting, arrogant, aggressive, vain, discouraged, suspicious, pompous, hypocritical and sarcastic are in every congregation. As the cartoon character Pogo said, "We have met the enemy, and they is us!"



The very fact that he urges us to dress ourselves with these virtues signifies that none of us has "arrived" spiritually. All of us are flawed, deficient and weak in some respects.

Let's be kind to one another as we pray daily to be clothe with the fruit of the spirit. Let us pray to be like Christ.

## Daughters of Kindness



We would like to recognize women who have served faithfully in the church as well as women who are not saved in the community, but has made a positive impact in the community.

Please forward your nominations to Pastor Eaton or Kimberly Eaton by August 16, 2009.

Recognition will be Sunday, August 30, 2009 at 11:00 AM Service.

## Back to School



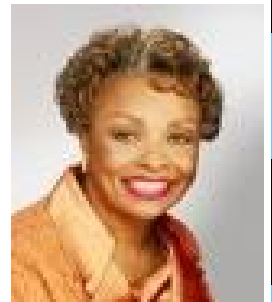
*It's Back to School time again. We are soliciting your support by donating financially to support the Women's Ministry Initiative in donating school supplies to our youth.*

*Deadline August 5th.*

*Please see Sister Helen Seales for more information.*

## Fifth Sunday

*Dr. Sheila Bailey of the Concord Missionary Baptist Church in Dallas, Texas will be our guest speaker at 11:00 am on Sunday August 30, 2009. We are asking for your support. Please invite your family and friends to this service.*



## Rev. Bruce Ford Lighthouse Ministry



The Lighthouse ministry will boast a curriculum that will deal with addictions that many of us are prone to as we navigate this life in the flesh. We will deal with addictions such as alcohol use, street and prescription drug use, gambling, pornography and smoking.

We will also address other addictions that may not be listed.

This ministry will be a source of love, comfort, deliverance, hope peace, protection and safety to those who genuinely want to change their lives.

You will be free from judgment and will work a program to apply biblical truths and to seek God's direction for your life.

This ministry will offer foundational classes such as prayer, bible reading and fellowship.

### **Our meeting dates**

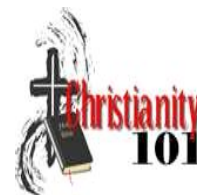
Every Thursday at 6:00 P.M.

If you want to be a part of this groundbreaking ministry,

See Rev. Bruce Ford for more information.



## **Brian & Ellen Frizell Primary Leaders New Members Orientation Ministry**



**Every Thursday at 6:00 PM**  
**See You There!**

Our New Members Orientation Ministry known as “*(Christianity 101)*” is a threshold to a wonderful beginning at Bethlehem. Its primary responsibility is to orient new believers in God's Word. Thereby, we present an orientation curriculum that offers foundational classes.

The complete series of studies will cover the beliefs and doctrines of Bethlehem that are based from Holy Scriptures. In addition, New Member Orientation acquaints new members with various areas of service in the church.

If you are a new member (one year or less) it is expected that you enroll in this course.

See Brian or Ellen Frizell for more information.



# Announcements

## August 2009-Back to School

### Sunday

**Nurse's Meeting**

**August 16th**

Immediately after service

### Thursday

**Christianity 101**

**Light House Ministry**

**6:00 PM**

August 6th

August 13th

August 19th

August 26th

### Monday

**Brotherhood**

**1st & 3rd Monday**

**6:00 pm**

August 3rd

August 17th

**Women's Mission**

**1st & 3rd Monday**

**6:00 pm**

August 3rd

August 17th

**Deaconess**

**6:15 pm**

August 24th

### Tuesday

**Usher Meeting**

**2nd & 4th Tuesday**

August 11th

August 25th

**Choir Rehearsal**

**6:00 pm**

August 4th

August 11th

August 18th

August 25th

### Friday

**Ministers Meeting**

**6:00 pm**

August 7th

August 14th

August 21st

August 28th

### Wednesday

**Bible Study**

**6:00 pm**

August 5th

August 12th

August 19th

August 26th

### Saturday

**Brotherhood**

**My Brother's Keepers**

**Men's Breakfast**

**August 1st, 2009**

**September 5th**

**8:00 am**



## Bethlehem Missionary Baptist Church

311 North Dunbar  
Pauls Valley, Oklahoma 73075

Phone: 405-238-5818

Email: [heargodsword@bethlehem.com](mailto:heargodsword@bethlehem.com)



**Bethlehem is for People Like You!**

**WE ARE ON THE WEB**

[WWW.HEARGODSWORD@BETHLEHEM.COM](http://WWW.HEARGODSWORD@BETHLEHEM.COM)

**Share the  
Love!**

### Calendar Of Events for May 2009

**Sunday: School :** 9:30 AM-10:30 AM

**Sunday: Worship Service:** 11:00 AM

**Monday: Women's Mission**

1st and 3rd Week: 6:00 PM-7:15 PM

**Monday: Brotherhood**

1st & 3rd Week-6:00 PM-7:00 PM

**Tuesday Usher Meeting:**

2nd and 4th Week 5:30 PM

**Tuesday Adult Choir Practice:** 6:00PM-7:00 PM

**Wednesday: Bible Study & Prayer:** 6:00 PM

**Thursday: Christianity 101**

**6:00 PM**

At the home of Minister Brian & Ellen Frizell

**Lighthouse Ministry**

Every Thursday 6:00 PM

**Saturday: Men's Prayer Breakfast**

1st Saturday of each month: 8:00 AM

## Leaders and Ministries

### Pastor

Rev. Michael Eaton

### Associate

### Pastors

Rev. Bruce Ford

Rev. T. D. Rushing

Minister

Brian Frizell

### Chairman

### of Deacons

Deacon Melvin Watts

### Deacons

Al Jackson

Bill Jones

Park Prince

Quinen Ross

### Church

### Secretary

Sis. Jocelyn Rushing

### Deaconess

Sis. Kim Jackson

Sis. Audrey Jones

Sis. Margie Prince

Sis. Jocelyn Rushing

Sis. Nell Watts

### Minister

### of Music/Choir

Vacant

### Sunday School

### Superintendent

Sis. Audrey Jones

### New Member Ministry

Brian & Ellen Frizell

### Brotherhood

Bro Morrie Baltzell

### Usher Ministry

Sis. Claudia Newton

### Nurse Ministry

Sis. Kim Jackson

### Culinary

### Ministry

Sis. Denise

Stafford

### Director of

### Women's Ministry/ Women's Mission

Sis. Kimberly Eaton

### Youth Director

Youth Pastor

Rev. T. D. Rushing

### Mimes

Sis. Theola Jackson

Sis. Audrey Jones

### Youngest Member

### Ministry

Sis. Isom Davis

### Mother's of the Church

Sis. Gladys Mc Cowen

Sis. Ella Watkins

### Trustees

Bro. Herman Jackson

Sis. Theola Jackson

Sis. Isom Davis

### Treasurer:

Bro Al Jackson

Bro. Herman Jackson

Sis. Audrey Jones

Bro Quinen Ross

### Benevolence

### Committee

Bro. Al Jackson

Sis. Isom Davis

Bro. Victor Jackson

### The Lighthouse

### Ministry

Rev. Bruce Ford